

[CAREER MENU](#)[WS Audiology EMEA](#)

FINANCE & ACCOUNTING · LYNGE, COPENHAGEN REGION, DENMARK

Manager, Group Risk Office

[Apply now](#)

To deliver on our corporate purpose of making a wonderful sound part of everyone's life, the newly established Group Risk Office is looking for a Manager of Group Risk Office.

In this role, you will be the experienced Enterprise Risk Management (ERM) professional who actively contributes to strengthening WSA's Global ERM Program. You will also be collaborating with the ERM network to implement a program that aims to proactively protect the organization while enabling purposeful growth within the organization's tolerance for risk.

[Apply now](#)

Specifically, a key project will be to engage key internal

stakeholders across the regions and functions to build on the existing processes, methodology and tools to support the ERM program implementation and operations. You will have the opportunity to engage and support the local teams and to be a lead for learning and development of the network.

Your Team

This role directly supports WS Audiology's Global ERM Program and will report to the Head of the Group Risk Office. As the Manager, you will act as an individual contributor, collaborating closely with the ERM network across global functions, as well as external stakeholders

What you will do

As the Manager of the Group Risk Office, you will serve as a Subject Matter Expert (SME) for the newly established ERM Role. Your primary responsibility will be supporting the business lines in identifying, assessing, managing, and monitoring enterprise-wide risks. You will also lead the implementation of a new ERM solution designed to automate risk management processes.

- Advanced understanding of risk management processes and frameworks, ability to facilitate risk identification and assessment using various techniques to identify emerging and strategic risks, knowledge of established best practice ERM frameworks such as COSO and ISO 31000 with an ability to practically implement it tailored to WSA.
- Develop and build [Apply now](#) s of the ERM program – e.g. ERM approach and methodology, risk

reporting, Key Risk Indicators, Risk Drivers, risk tolerance, etc.

- Implement and oversee the assigned ERM activities and projects ensuring operational execution to actionable projects, applying effective project planning and management, collaboration, coordination, and application of expertise skills to ensure quality, timely deliverables appropriate for the target audience.
- Manage the project to implement a new Group-wide ERM system/tool for recording, monitoring, and reporting on risks.
- Lead and oversee assigned ERM activities and projects, ensuring effective execution and timely delivery of actionable results. Apply strong project management skills to ensure quality outcomes for diverse stakeholders.

What you bring

We are looking for a seasoned professional with a top-down risk-based mindset and solid experience in enterprise risk management. The ideal candidate will have extensive experience working within global, matrixed organizations, combined with a strong ability to communicate effectively across multiple stakeholders. Experience in financial reporting risks and mitigation is considered an advantage as the Group Risk Office is also responsible for driving programs related to internal controls over financial reporting (ITGC & ICFR).

There is a high level of stakeholder exposure connected to this opportunity, and traveling to key strategic sites should be expected (5-15 travel days per year).

Experience

[Apply now](#)

- A degree in Finance, Risk, or other relevant area of study (Cand. Merc. or equivalent).
- 5-10 years of experience working with ERM, and potentially financial reporting risks, and project management, with experience from both public/private sectors and management consultancy within complex global contexts.
- Experience applying and implementing the COSO Framework.
- Strong understanding of internal controls over financial reporting.
- Proficiency in risk management concepts, compliance, and regulatory requirements.

Personal competencies

- Self-driven, highly motivated, and proactive in solving challenges and driving results.
- Solution-oriented with the ability to offer practical, actionable insights to address issues.
- Tactful in approach but able to make decisions and draw conclusions.
- Collaborative mindset with strong functional sparring abilities, offering guidance and support across departments.

Our corporate language is English, so you need to be fluent in English, both verbally and in writing.

Who we are

[Apply now](#)

At WS Audiology, we provide innovative hearing aids and hearing health services.

Together with our 12,000 colleagues in 130 countries, we invite you to help unlock human potential by bringing back hearing for millions of people around the world.

With us, you will become part of a truly global company where we care for one another, welcome diversity and celebrate our successes.

Sounds wonderful? We can't wait to hear from you.

WS Audiology is an equal-opportunity employer and committed to creating an inclusive employee experience for all. Regardless of race, color, religion, national origin, age, sex, gender, gender identity, gender expression, sexual orientation, marital status, medical condition, ancestry, disability, military or veteran status we firmly believe that our work is at its best when everyone feels free to be their most authentic self.

Department

Finance & Accounting

Role

Business Services

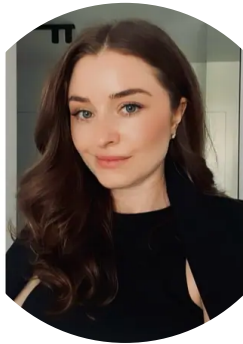
Locations

Lynge, Copenhagen

Apply now

Employment type

FULL-TIME



CONTACT

Dagmara Leszczynska

TA Associate EMEA LA CA – Human Resources

Current Job Openings

Finance Business Partner

Finance & Accounting · Istanbul · Hybrid 📶

Financial Controller, Nordics

Finance & Accounting · Lynge, Copenhagen Region, Denmark

Financial Controller

Finance & Accounting · Lynge, Copenhagen Region, Denmark

[Apply now](#)

[More jobs](#)

Lynge, Copenhagen Region, Denmark

FINANCE & ACCOUNTING · LYNGE, COPENHAGEN REGION, DENMARK

Manager, Group Risk Office

[Apply now](#)

Personal information

First name *

Jane

Last name *

Doe

Email *

jane@example.com

Phone *

+45 32 12 34 56

Upload CV *

Drop your file or [upload](#)

Additional files

Drop your file or [upload](#)

Cover letter

Write your letter...

I have read the [Privacy Policy](#) and agree that WSAudiology will store, process and use my personal data to process my job application and send me information about WSAudiology.
[Apply now](#)
I also confirm that I did not share with WSAudiology any:

*personal data revealing my racial or ethnic origin, political opinions;
my philosophical beliefs;
information about my trade-union membership;
my genetic data and biometric data;
data related to my health (apart from disability status if required for the
position), and
data concerning my sex life or sexual orientation.*

Submit application

Career site

[Start](#)

[Departments](#)

[People](#)

[Jobs](#)

[Data & privacy](#)

[Manage cookies](#)

Departments

[Finance & Accounting](#)

[Information Technology](#)

[Legal](#)

[Global Marketing](#)

[Retail](#)


[Global Operations &
Supply Chain](#)

[All departments](#)

WS Audiology

[WS Audiology](#)

[Employee login](#)

[Candidate Connect login](#) · [English \(United Kingdom\)](#) 

Apply now

Already working at WS Audiology EMEA?

Let's recruit together and find your next colleague.

[Log in](#)



Teamtailor

[Apply now](#)